



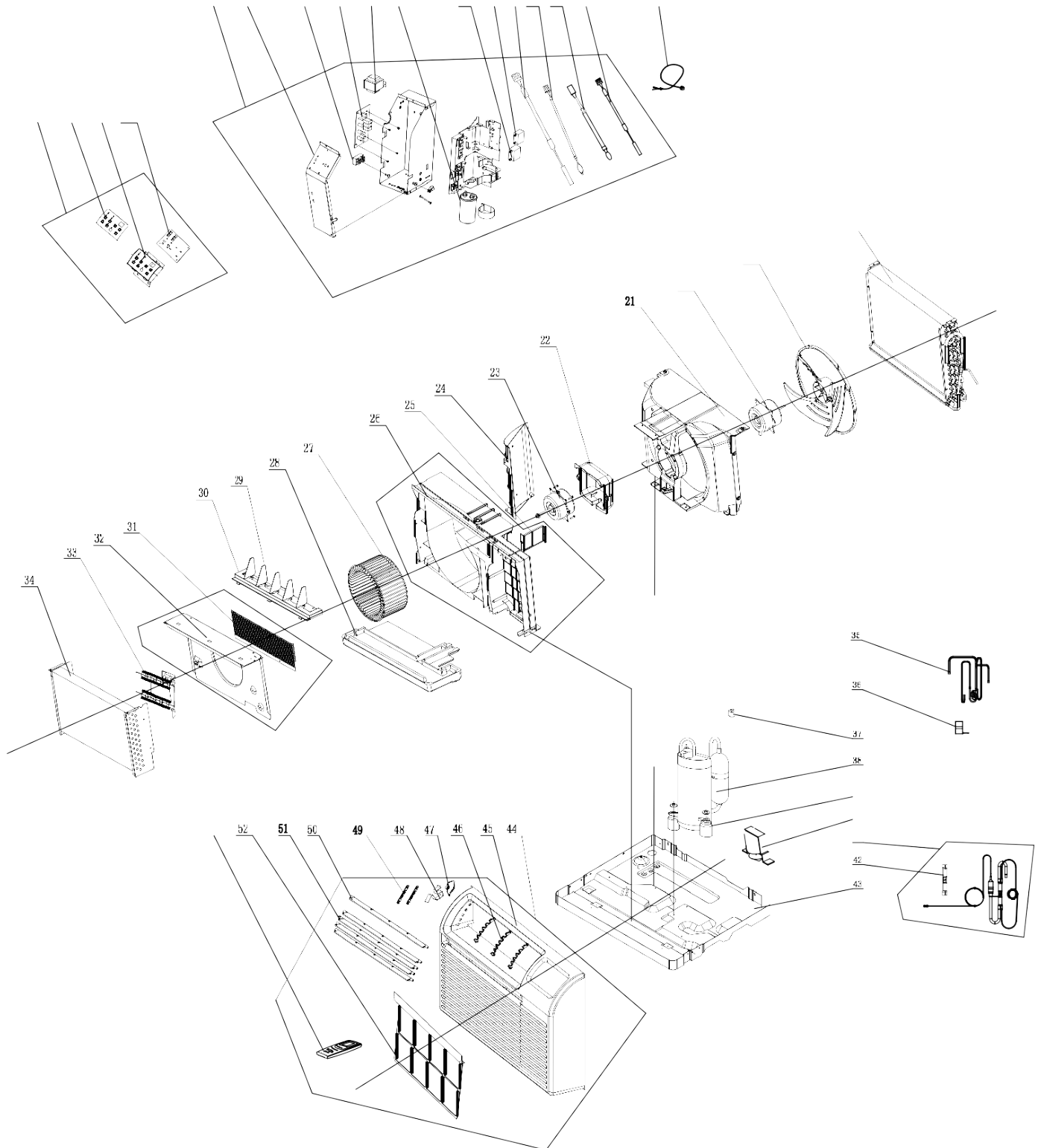
## **PARTS LIST**

### **Room Air Conditioner**

PTTH12B-1



# EXPLODED VIEW



## REPLACEMENT PARTS

Location	Part Name	Quantity	Part No.
1	LCD Cover Sub-assy	1	209044060007_X30266
2	Membrane	1	63029901724
3	LCD Cover	1	2012103301
4	Display Board	1	300001060115
5	Electric Box Assy	1	100002061516_X30266
6	Electric Box Cover	1	01411405
7	Terminal Board	2	42011103
8	Main Board	1	300002000832
9	Transformer	1	450002000010
10	Capacitor CBB65	1	3300008101
11	Capacitor CBB61	1	3301074710
12	Capacitor CBB61S	1	3301074701
13	Temperature Sensor	1	390000598
14	Temperature Sensor	1	390001978G
15	Temperature Sensor	1	390000372
16	Room Sensor	1	39000191
17	Pwer cord (LCDI)	1	4002036353
18	Condenser Assy	1	01100200251
19	Axial Flow Fan	1	10331008
20	Fan Motor	1	1501104710
21	Diversion Circle	1	200150000001
22	Baffle Plate	1	26112905
23	Fan Motor	1	150110335
24	Baffle Plate	1	200012000010
25	Baffle Plate	1	200012000015
26	Propeller housing Assy	1	209027000004
27	Centrifugal Fan	1	10312903
28	Water Tray	0	none
29	Air Louver	5	10512907
30	Swing Louver Clamp	1	24211045
31	Rear Grill	1	01451001
32	Front Clapboard Assy	1	01231100
33	Electric Heat Groupware	1	32001011
34	Evaporator Assy	1	01100100159
35	4-Way Valve Assy	1	03021031
36	Magnet Coil	1	4300040022
37	Overload Protector	0	none
38	Compressor and Fittings	1	00103370
39	Compressor Gasket	3	76710208
40	Drainage Valve	1	07101001
41	Capillary Sub-assy	1	03000600247
42	One way Valve	1	07131147
43	Chassis Sub-assy	1	017000000321P
44	Front Panel Assy	1	00800600001_X30266
45	Front Panel	1	27230010744
46	Guide Louver Support	3	2421290601
47	Ratchet Wheel	1	24232901
48	Click Spring	1	73022901
49	Linkage of Guide Louver	2	1058290403
50	Guide Louver 2	4	1051290901
51	Guide Louver 1	1	1051290801
52	Filter Sub-Assy	1	1112103002
53	Remote Controller	1	30510092_X30266

---

Due to ongoing product improvements, specifications and dimensions are subject to change and correction without notice or incurring obligations. Determining the application and suitability for use of any product is the responsibility of the installer. Additionally, the installer is responsible for verifying dimensional data on the actual product prior to beginning any installation preparations.

Incentive and rebate programs have precise requirements as to product performance and certification. All products meet applicable regulations in effect on date of manufacture; however, certifications are not necessarily granted for the life of a product. Therefore, it is the responsibility of the applicant to determine whether a specific model qualifies for these incentive/rebate programs.

*Comfort-Aire*<sup>®</sup>

1900 Wellworth Ave., Jackson, MI 49203 • Ph. 517-787-2100 • [www.marsdelivers.com](http://www.marsdelivers.com)

